



A smooth face, brushed back and contrast coverstitching make this warm fleece jacket a classier alternative to more casual fleece.

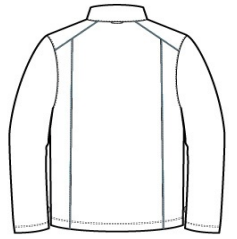
- Can be zipped in and secured by snap attachments inside an outer Collective layer
- 5.9-ounce, 100% polyester fleece
- Slightly longer length
- Molded center front zipper
- Front reverse-coil zippered pockets
- Open cuffs and hem

CARE INSTRUCTIONS

Machine wash cold with like colors; do not use fabric softener; tumble dry low; remove promptly; only non-chlorine bleach when needed; cool iron if necessary; do not dry clean.



front



back

HOW TO MEASURE



CHEST WIDTH

Measure under the arm and around the fullest part of the chest with arms down, keeping tape horizontal.

SIZE CHART

	3XL	4XL	XS	S	M	L	XL	2XL
Chest	50-53	54-57	32-34	35-37	38-40	41-43	44-46	47-49

COLOR INFORMATION

				
Deep Black PMS NTR BLACK	Graphite PMS 7540C	Gusty Grey PMS COOL GRAY	Night Sky Blue PMS 654C	River Blue Navy
C		8C		