



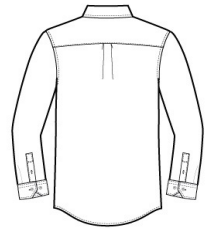
Thoroughly updated, this crisp nailhead shirt has a silky feel and a wrinkle-resistant finish for exceptional non-iron performance. 4-ounce, 60/40 cotton/polyester with pucker-free taped seams and RH engraved buttons to elevate the office-ready look. Button-down collar, left chest pocket, back box pleat and mitered adjustable cuffs.

CARE INSTRUCTIONS

Machine wash cold with like colors, only non-chlorine bleach when needed, tumble dry low, warm iron if needed.

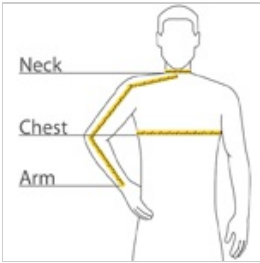


front



back

HOW TO MEASURE



CHEST

With arms down at sides, measure around the upper body, under arms and over the fullest part of the chest.

NECK

Measure around the base of the neck, inserting a finger or two between the tape and neck for comfort.

ARM

Place hand on hip. Start at the center of the back of the neck and measure across the shoulder, to the elbow, and then down to the wrist.

SIZE CHART

	XS	S	M	L	XL	2XL	3XL	4XL
Chest	32-34	35-37	38-40	41-43	44-46	47-49	50-53	54-57
Neck	17	17	17 1/4	18	19	19 3/4	20 1/2	21 1/4
Arm	30 1/2	32	34	35	36 1/2	37 1/2	38 1/2	39 1/2
Pocket Height	5	5	5 1/4	5 1/4	5 1/4	5 1/4	5 1/4	5 1/4
Pocket Width	4 3/8	4 3/8	4 5/8	4 5/8	4 5/8	4 5/8	4 5/8	4 7/8

COLOR INFORMATION

